



UNIVERSAL

Fits almost every charging station, such as Easee, Zaptec, Tesla Wall Connector Gen 3.0 and many more. If you do not find our charging box in our list, just get in touch. Then we will make a mounting plate that fits.

MODULE BASED

Each post can have 1, 2 or 4 charging boxes to get the most out of the installation. It provides the opportunity for different combinations to suit your needs.

SERIAL CONNECTION

The supplied coupling set makes it easy and convenient to connect several poles together in series.

PRACTICAL

Integrated cable holder and plug holder are standard with the charging pole. Organizing the cable and the charging plug has never been easier.



ROBUST AND RESISTANT

Pole of Norway is made of Norwegian aluminum and is powder coated in accordance with ISO 12994 C4.

PREMIUM QUALITY

Aluminum from Hydro with powder coating from JOTUN ensures a long life time and great finish.

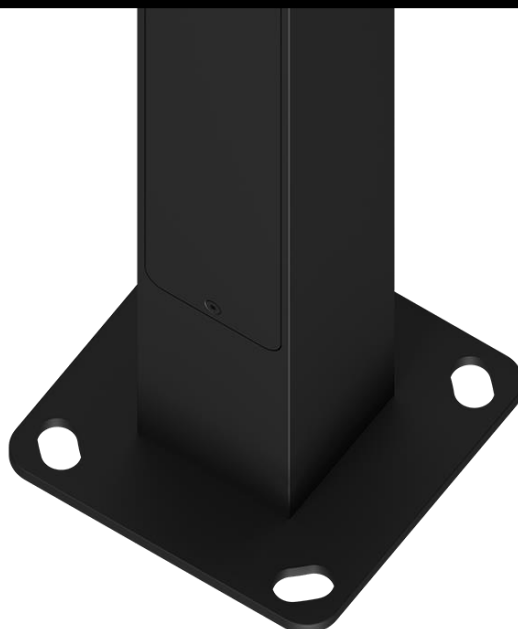
Standard color is RAL 9005. Other colors can be supplied on request.





VERSITAILE

Mounting plate(s) fits many different charging stations (Easee pictured) and the ceiling are standard with the pole. There is possibility of light on the pole (optional) to give a warm and pleasant atmosphere around the pole. The bottom plate has a hole pattern of 160 CC with a cutout in the holes to rotate and adjust the pole in the foundation.





TAILOR MADE

Pole of Norway can be tailor made by different lengths, mainly 150, 120 and 90 cm (pictured). Other lengths can be supplied on request. Note that cable holder and plug holder is not possible on pole lower than 120 cm.

CABLE HOLDER

The pole comes with a cable holder which makes it very convenient to organize the charging cable at the pole. This prevents the charging cable from lying on the ground and from getting dirty.



PLUG HOLDER

The included plug holder(s) make it convenient to store the charging plug when you are done charging the car. Simply plug the charging plug into the plug holder and it stay there. The plug holder protects the charging plug from bad weather and corrosion.

CONNECTION TERMINALS

The supplied connection terminals make it possible to connect several poles in a series. The number of terminals used depends on the type of power grid. It supports TN, IT / TT 1- and 3-phase.

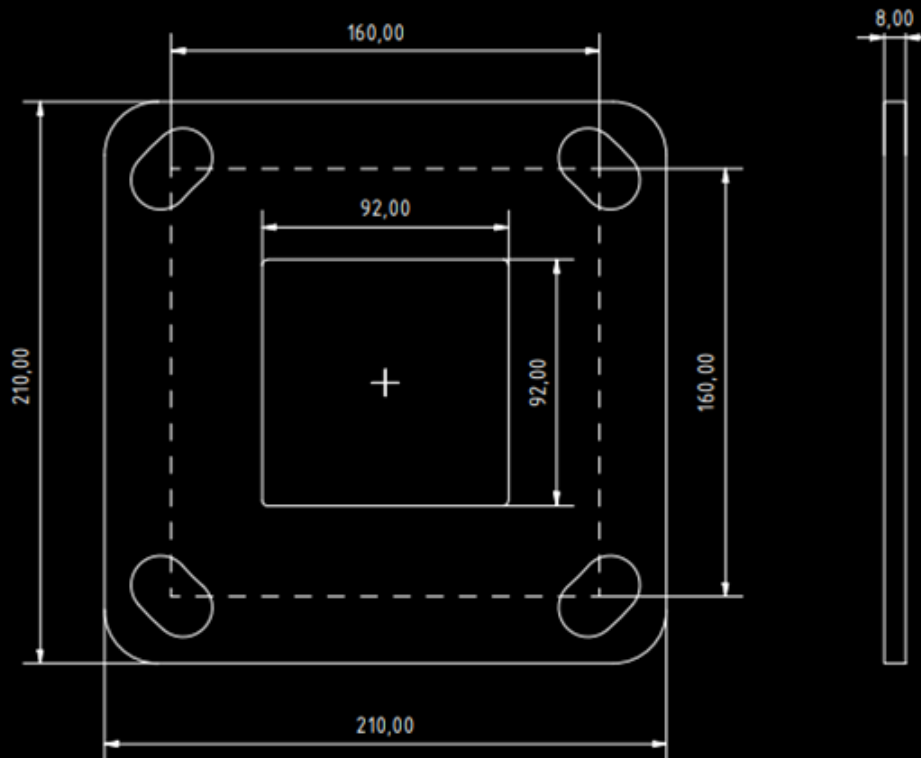


Specifications - Pole



Large mounting hatch and possibility for 3 DIN-rails

Specifications - Base plate



ASSEMBLY INSTRUCTIONS

- 1) Fastening with bolts to concrete, metal or wooden floors that are dimensioned for this
- 2) The pole must be mounted to the ground, or to the ground with a buried foundation that is compacted
- 3) The post must be mounted on the base or the ground with a cast-in-place foundation that is cast in concrete

MAINTENANCE

Wipe the post with a damp cloth when cleaning is needed.

Technical specifications

Dimensions, dimensions and weight	Material and finish
<p>Dimensions post: 150 x 10 x 10 cm (H x L x W)</p> <p>Dimensions mounting for charging station: 27 x 27 x 0.3 cm (H x L x W)</p> <p>Weight post: 6.65 kg</p> <p>Weight ceiling: 0.95 kg</p> <p>Weight of cable holder: 0.20 kg</p> <p>Dimensions and weight of the mounting plates depend on which charging station is mounted.</p>	<p>Aluminum</p> <p>NS-ISO 12944 standard class C4 powder coating</p> <p>Black (RAL 9005) - Available in all RAL colors.</p>
Appropriate foundations	Connection terminals
<p>Fits Vik Ørsta foundation, Article number: 3530160C</p> <p>Fits Vik Ørsta anchoring frame, Article no: 3500160</p> <p>Mounted directly on concrete foundation with bolts and nut.</p> <p>Supplied with acid-proof screws for attaching the back plate to the column. Screws for mounting the charging station on the back plate are not included. Ø5mm screws are normally used to fasten the charging station.</p> <p>Fits the Norwegian Foundation, Article number: NF500</p>	<p>Connected via terminals</p> <p>Approved cable cross section Al-cable: 10-50mm²</p> <p>Approved cable cross section Cu cable: 1.5-35mm²</p> <p>Tightening torque for Al-cable: 10 Nm</p> <p>Tightening torque for Cu 1.5-6mm²: 4 Nm</p> <p>Tightening torque for Cu 10-35mm²: 10 Nm</p> <p>Dismantling length: 17 mm</p> <p>Maximum voltage: 450V</p> <p>Maximum load: 100A</p>
Mounting plates	Technical information
<p>Easee Home</p> <p>Easee Charge</p> <p>Tesla Wall Connector Gen 3.0</p> <p>Zaptec Pro</p> <p>Zaptec GO</p> <p>EO Mini</p> <p>GARO GLB</p> <p>Charge Amps HALO</p>	<p>Degree of protection: IP44</p> <p>Impact resistance: IK10</p>

Pole of Norway



YOUR LOCAL PARTNER

Fivezero GmbH
Talweg 19
8707 Uetikon am See

<https://www.evshop.ch>
info@evshop.ch